

# FLORIDA DEPARTMENT OF TRANSPORTATION

## Public Information Meeting



### State Road (S.R.) 369 (Crawfordville Highway) from south of East Ivan Road to north of S.R. 267, Wakulla County

Tuesday, March 8, 2016

6:30 p.m. to 7:30 p.m. EST

Wakulla One Stop Community Center

Crawfordville Room

318 Shadeville Road, Crawfordville

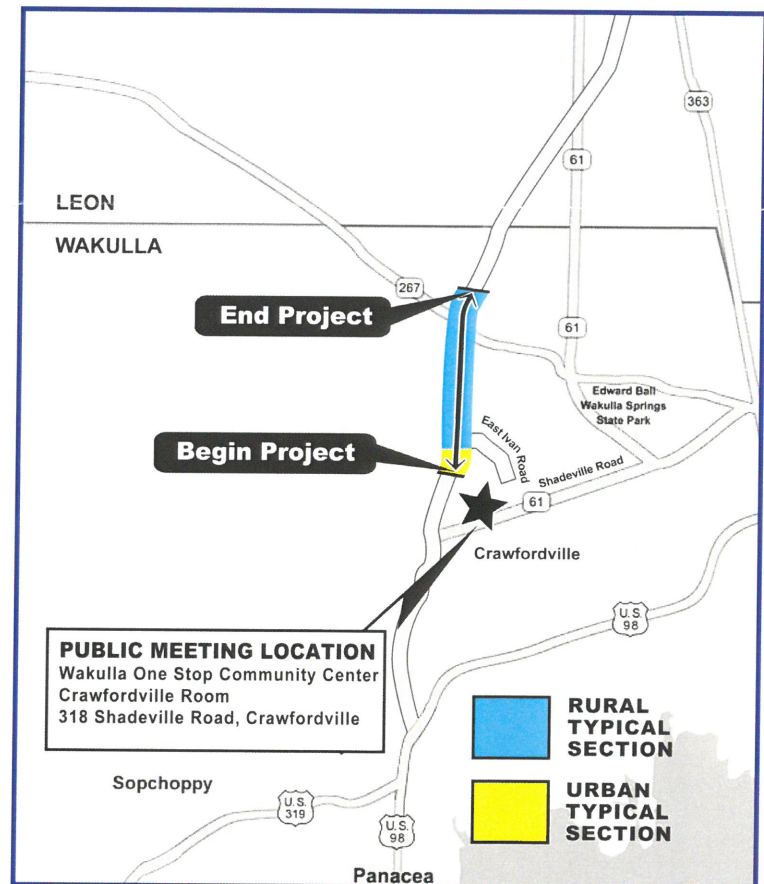
#### PROJECT INFORMATION

The intent of this project is to widen 3.3 miles of State Road (S.R.) 369 (Crawfordville Highway) from two to four lanes, south of East Ivan Road to north of S.R. 267. Stormwater management facilities and safety upgrades are included. Sidewalks, bicycle lanes, and a raised grass median are planned for 1,000 feet of roadway south of East Ivan Road. Paved shoulders with a depressed grass median are designated for the remainder of the project. This project is funded for right-of-way acquisition. Bids for construction are scheduled to be received winter 2019.

#### MEETING INFORMATION

This meeting is being held to provide information and to receive input concerning proposed improvements to the above-referenced project. Maps, drawings, and other information will be on display. There will be no formal presentation; however, Florida Department of Transportation (FDOT) representatives will be available to discuss proposed improvements, answer questions, and receive comments.

Written comments/questions may be submitted at the meeting, or via email to [noelle.warren@atkinsglobal.com](mailto:noelle.warren@atkinsglobal.com), or by U.S. Mail to Noelle Warren, P.E., FDOT General Consultant Project Manager, 1141 Jackson Avenue, Chipley, Florida 32428. All comments must be postmarked no later than Friday, March 18, 2016, to become part of the official meeting document.



Financial Project Identification Number:  
220495-7-32-01

#### FOR MORE INFORMATION

##### Noelle Warren, P.E.

FDOT General Consultant Project Manager

Phone: Toll-free (866) 855-7275

Email: [noelle.warren@atkinsglobal.com](mailto:noelle.warren@atkinsglobal.com)

##### Ian Satter

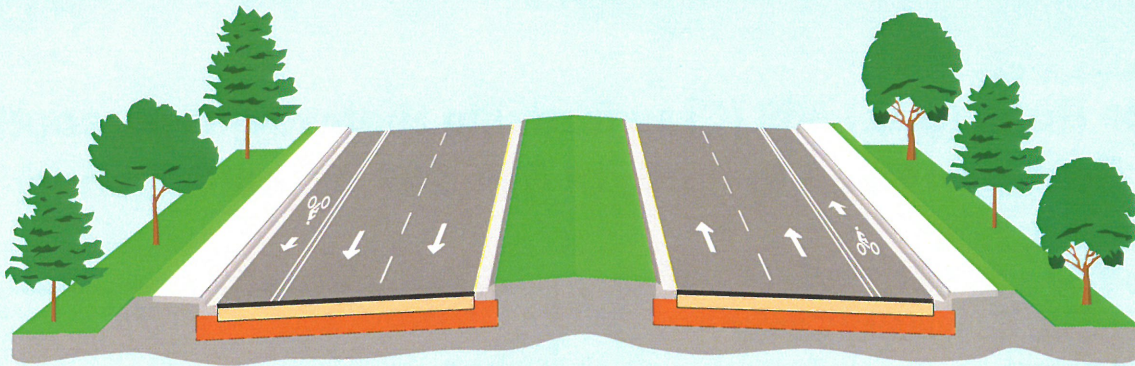
District Three Public Information Director

Phone: Toll-free (888) 638-0250, extension 1205

Email: [ian.satter@dot.state.fl.us](mailto:ian.satter@dot.state.fl.us)



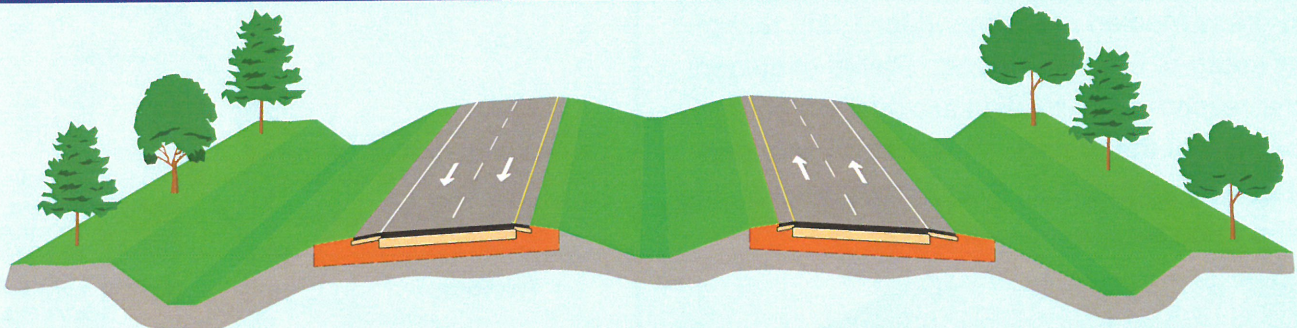
## TYPICAL SECTIONS



**Four-Lane Urban Typical Section**

The four-lane urban typical section has the following features:

- Two eleven feet wide travel lanes in each direction
- A seven feet wide bicycle lane in each direction
- A six feet wide sidewalk in each direction
- Curb and gutter drainage
- A raised, restrictive grass median



**Four-Lane Rural Typical Section**

The four-lane rural typical section has the following features:

- Two twelve feet wide travel lanes in each direction
- A five feet wide paved shoulder in each direction
- Open ditch drainage
- A depressed, restrictive grass median



Follow Us On Twitter @MyFDOT\_NWFL



Like us on Facebook at  
[www.facebook.com/MyFDOTNWFL](http://www.facebook.com/MyFDOTNWFL)

Public participation is solicited without regard to race, color, national origin, age, sex, religion, disability, or family status.